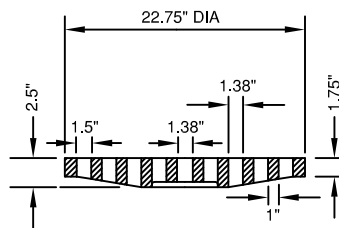
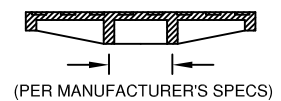


SECTION A-A
CAST FRAME



SECTION B-B
CAST OPEN LID



SECTION C-C
CAST SOLID LID

NOTES:

- APPROVED MANUFACTURER'S PRODUCT NUMBERS FOR FRAMES AND LIDS:
 - PAVED AREAS (SOLID LID): EAST JORDAN 1050, EXTRA HEAVY DUTY, TYPE A SOLID COVER
 - PAVED AREAS (OPEN LID): EAST JORDAN 1050, EXTRA HEAVY DUTY, TYPE 1020M1 GRATE
 - NON-PAVED AREAS (SOLID LID): EAST JORDAN 1050, MEDIUM DUTY, TYPE A SOLID COVER
 - NON-PAVED AREAS (OPEN LID): EAST JORDAN 1050, MEDIUM DUTY, TYPE 01 BEEHIVE GRATE
- SANITARY FRAMES AND COVERS FOR MANHOLES LOCATED WITHIN FLOODPLAIN AREAS AND HAVING A RIM ELEVATION BELOW THE FLOOD PROTECTION ELEVATION SHALL BE WATER TIGHT, LOCK TYPE COVERS- NEENAH NO. R-1755-B OR APPROVED EQUAL.
- ALL SANITARY LIDS MUST BE GASKET TYPE WITH CONCEALED PICKHOLES.
- SOLID LIDS FOR VILLAGE OWNED STRUCTURES MUST HAVE THE WORDS "VILLAGE OF MOUNT PROSPECT" AND HAVE THE NAME OF THE UTILITY (WATER-SANITARY-STORM) CAST INTO THE LID.
- OPEN LIDS MUST HAVE THE WORDS "DUMP NO WASTE, DRAINS TO WATERWAYS" CAST INTO THE LID.
- OTHER MANUFACTURER'S PRODUCTS OF EQUAL SPECIFICATION MAY BE SUBSTITUTED AT THE APPROVAL OF THE VILLAGE ENGINEER.

Village of Mount Prospect

Public Works Department

1700 W. Central Rd.

FRAMES AND LIDS

Last Revised: 8-09