

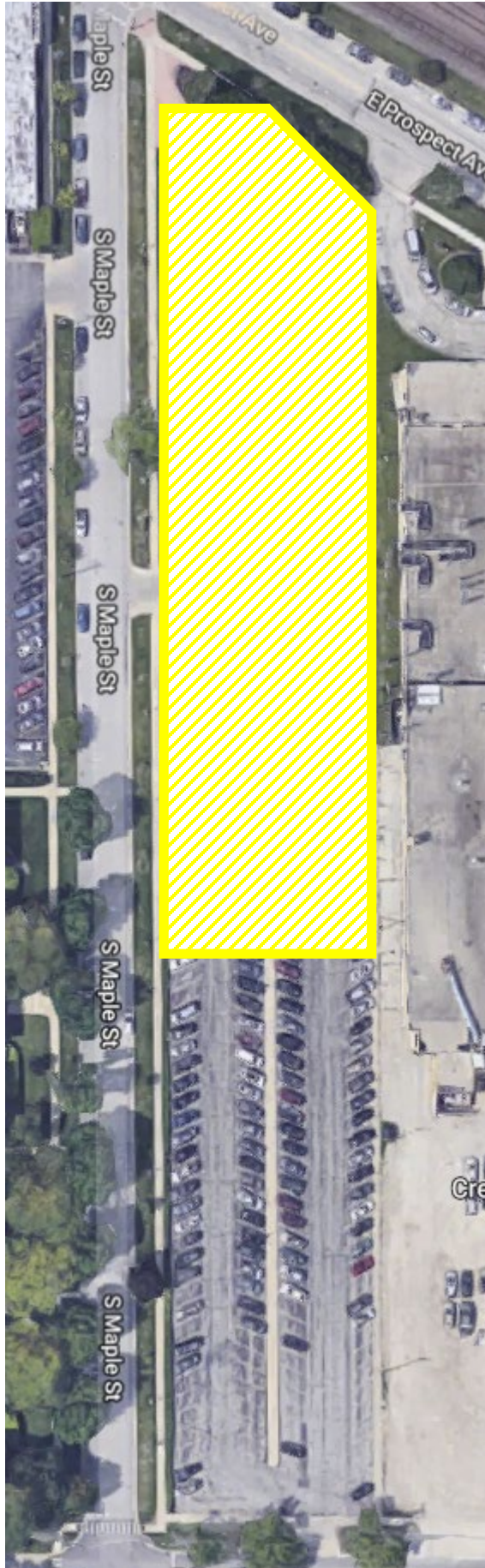
STEP 1: May 2019
Provide 100 spaces in the Village Garage for Village resident Metra commuters. Approximately 300 yard walking distance from the garage to platform.

STEP 2: May 2019

Open up spaces in Lions Park parking lot for Village resident Metra commuters.



Metra Parking Phasing Plan



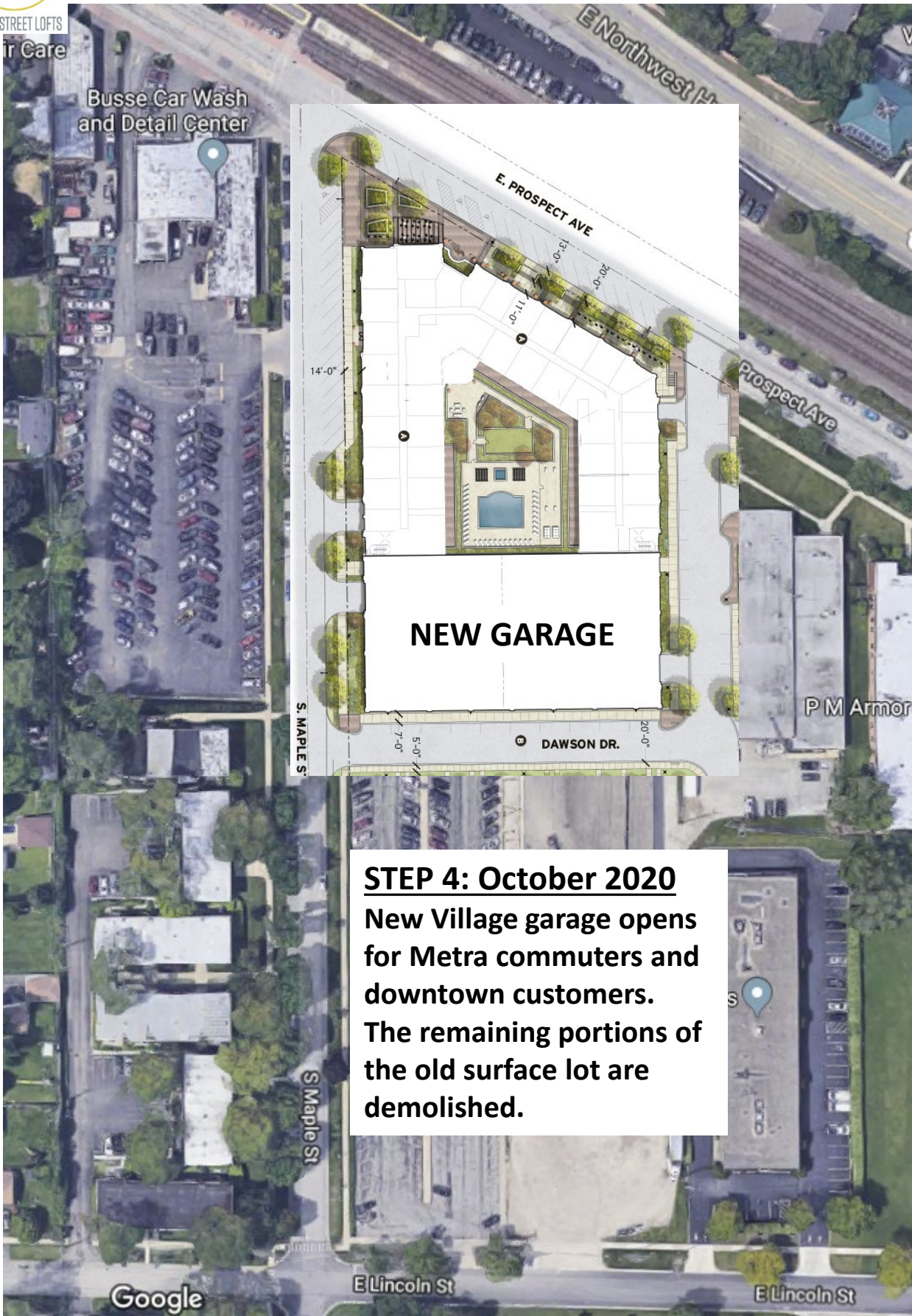
STEP 3: July 2019

Preserve 120 Metra commuter parking spots on the south end of the existing Metra lot while demolition is performed to the north end to make way for construction of the new garage.



MAPLE STREET LOFTS

Metra Parking Phasing Plan



STEP 4: October 2020
New Village garage opens for Metra commuters and downtown customers. The remaining portions of the old surface lot are demolished.

Google

E Lincoln St

E Lincoln St